

‘The sky is the limit’: Take a look at the coming east side Pinney Library

- By Lisa Speckhard Pasque
- Jun 15, 2019
- From *The Cap Times*, June 19, 2019

Sarah Lawton, supervisor at Madison's Pinney Library, can't wait for the new building to open next spring. While “amazing things” happened at the old Pinney Library, space was limited, she said.

“We have amazing staff who have been doing so much work in such a kind of substandard facility,” she said. “To be able to have our talented librarians and library staff paired with an incredible community and a new facility, I just think the sky is the limit.”

Next spring, the third-busiest library in the city will open a brand-new facility. It will be housed in the Royster Commons development at the corner of Dempsey and Cottage Grove roads. The building includes 16,000 square feet of commercial space and 86 apartments.

The \$10.2 million library project will result in a 20,000 square-foot space, significantly bigger than the old 12,000 square-foot area. The new space is meant to promote community, early literacy and play.

It should also better balance Madison's public library system, said Jenni Jeffress, executive director of the Madison Public Library Foundation.

“We have a great Central Library. We’ve done a lot of work on the south side and west side,” she said, pointing to Sequoya, Meadowridge and Goodman South Madison as relatively new or remodeled libraries.

“I think the east side hasn’t seen the same improvements in libraries,” so the new Pinney Library just makes sense, she said.

Construction on the interior of the building started in April, and the library hopes to open in the spring of 2020.

THE STUDIO

Near the entrance will be The Studio, which Lawton called “one of the most exciting things about the new library.”

While it may host artists in residence, like the Central Library’s Bubbler, Lawton said, “we don't want to build a makerspace, we want to build a space that’s flexible that can be whatever it is our community wants it to be.”

The room will be equipped with a utility spray sink and cork flooring making it amenable to arts and crafts, Lawton said, but other activities in the room could include back-to-school health screenings, resource fairs, interactive displays or an afterschool space for teens.

Construction at the new Pinney Library in Madison. Construction on the building is slated to be done by the end of 2019 with furnishings and equipment to go in at the beginning of 2020.

MICHELLE STOCKER

SPACE FOR KIDS

Unlike the old branch, the new Pinney will be a dedicated children's area, which will be screened from the rest of the library with glass decorated with colorful vinyl illustrations.

It includes a separate children's program room great for story time, craft projects and children's performers, Jeffress said, as well as an early childhood area PlayLab.

The PlayLab will be a space for kids to interact with equipment like cubes and ladders to develop gross-motor skills. Part of the PlayLab will feature AnjiPlay, also utilized by One City Schools, which encourages "real play" — play for its own sake, and not "false play," or adult-directed play. At One City, kids are given materials like barrels, ladders and planks and largely left to their own devices.

There are five important practices to foster early literacy, Lawton said: reading, singing, talking, writing and playing.

"Play is the most easily accessible, because play is something that everybody participates in, in every culture," she said. "We see play as really being a gateway into all the early literacy and learning practices."

The kids' area will also feature a special display of Spanish-language picture books, "really reflecting the fact that the Spanish-language speaking community on this side of town, the numbers have just increased astronomically," Lawton said.

A bicycle pavilion is part of the new Pinney Library.

OTHER FEATURES

In the planning stages of the library, community members asked for an enclosed quiet reading room, a better children's space and a community room, Jeffress said, and the new library fulfills all those requests. It will also contain several study rooms and a family study room for parents who need to get work done with children.

The library will have public desktop computers and laptops. There will also be a business center where patrons can make copies, print documents or ask for help on a resume.

There will be new, easy-to use self-checkout technology, Lawton said. All library restrooms will be unisex, individual restrooms.

There will also be an outdoor garden and patio area with a bike pavilion, along with the first drive-through book drop in Madison.

A large community room will be able to seat about 100 people, and will have a camera system connected to Madison City Channel, meaning large public meetings like City Council meetings could be held there.

"It really expands access to government on the east side," Lawton said.

Construction on the building is slated to be done by the end of 2019 with furnishings and equipment to go in at the beginning of 2020. The goal is to move in by March 2020, Jeffress said.

The foundation still has \$238,000 to raise of its \$1.6 million goal, Jeffress said, which will support construction, programming and an endowment for Pinney.

Additional Community Feedback on New Library (5/20-6/19)

Submitted on Monday, June 3, 2019 - 12:40pm

What do you love about the library? Love the preorder/hold option. Love the special programs offered from toddler to adult ages.

How do you use the library? Special programs, summer program, books, movie & video games. Often reserve on-line (hold feature)

What would you like to see in a new library building? I like that you include a teen area, in addition to a children's area. Want to see large enough spaces for community programs (guest speakers, book clubs, & arts/craft). Would be nice to have a sink in a room for craft clean up. Definitely need parking to accommodate programs.

Other comments: Although gardens are around the current library, they are not the reason I use the library. Keep that cute statue of the kids on a log but go low maintenance for the rest of the grounds.

Submitted on Monday, June 10, 2019 - 12:18pm

What do you love about the library?

How do you use the library? Books, Media and Programs

What would you like to see in a new library building? A drive up window has been a huge asset at my former library. Patrons can drive up and drop off or pickup their reserves. No need to park and take babies out of their car seats. It is appreciated during bad weather as well. One can also pay fines at the drive up. This would require additional staff to work the window as well.

Submitted on Tuesday, June 11, 2019 - 4:09pm

What do you love about the library?

How do you use the library?

Me-Comp & wi-fi access, copy machine, vids, linkcat
my kid - loves toys, train table, blocks, puzzles

What would you like to see in a new library building?

- area for kids to be a bit louder
- open tables/desks

Submitted on Tuesday, June 11, 2019 - 4:08pm

What do you love about the library? Friendly staff, seem to anticipate needs (plastic bags by self-check in rainy weather..)

How do you use the library? Computers, audiobooks,movies, tech help, weird ref. questions :)

What would you like to see in a new library building? Fine-free, more teen programs & inviting teen space, Lucky Day/Serendipity new movies, more BOCD?

Other comments: Would love to see Oregon go fine-free as so many other libraries in the area have. (There is a great TED talk on the reasons!)

Submitted on Tuesday, June 11, 2019 - 4:16pm

What do you love about the library? * Everything * Staff is awesome!*

How do you use the library? Books, Audio, Programs, Computers, Printers, School, Fun, Life !*

What would you like to see in a new library building? Electric car charging, Solar Panels, Solar Hot Water + Electric, Green Building.

Other comments: We Love the Oregon Library!*

Submitted on Monday, May 20, 2019 - 11:29am

What do you love about the library?

1. Being able to order books online if they are not available on location.
2. That computers are available for people to use.
3. So many offerings of classes, events and more.
4. That the location is in the downtown area - convenient for all in the community.
5. The staff! Wow - what wonderful people.
6. That there is a play area for the kids.
7. That promoting/advertising events and happenings at the library is done on social media.

How do you use the library?

1. I order books online occasionally.
2. I have helped as the 'Event Photographer' for some events sponsored by the library.
3. I have been asked to teach a photography class on 'Travel & Vacation' on June 20, 2019.
4. The library has been gracious in allowing the photography group I started in April 2019 to hold their monthly general meetings onsite.

What would you like to see in a new library building?

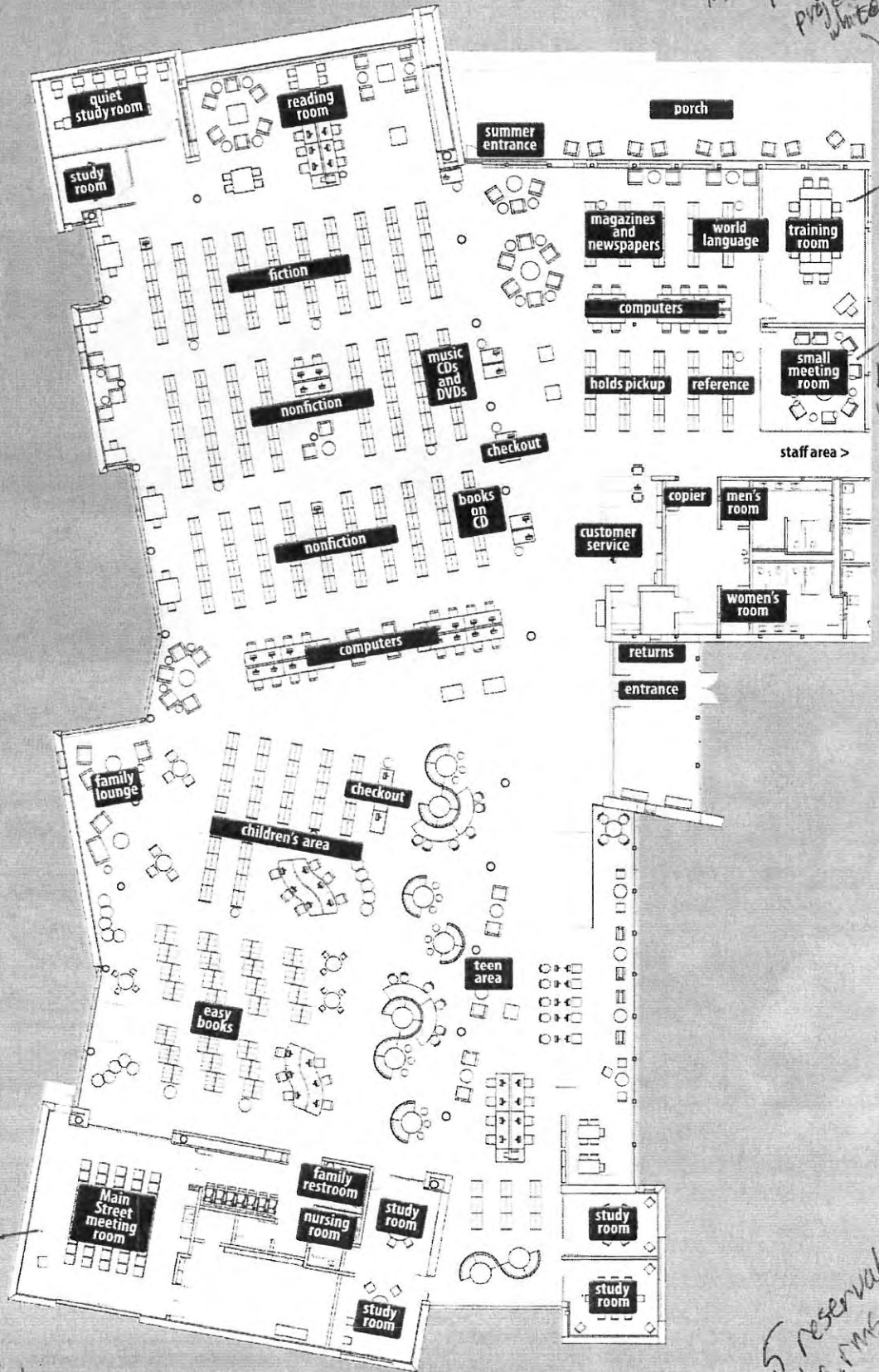
1. More rooms for classes and such to be available. The school district has opened doors to some schools to our photography group for classes; however, they must be held on school nights. That severely limits the group in having classes there on weekends or during times when school is not in session. If the library had more rooms available - our photography group might have better chances of holding those classes there.
2. Two levels! Much of the main library could be on the first level, where books, computers and offices would be located. On the second level, the classrooms (of various sizes) could be located.
3. More room for staff to have for their workspace. I was allowed at one event to put my coat in the back and saw just how much of a shortage there is for staff.
4. Adequate parking at the new building. I have heard this is a real issue with those in the area around the new location - too much concrete. If the

library expands and has a bigger and nicer facility - more parking than what is currently available needs to be at the new location. Not to be 'hard-nose' with neighbors, but compromising on the size of the building, parking availability and more only means that this new facility will quickly be out-grown.

Other comments: Oregon is growing and one of the nice things for families is the awesome school system available to their kids. Hand-in-hand with the school system is the library. As Oregon grows - so should the availability of resources. While some in the community do not want growth - it is inevitable. Resources need to continue to grow and be made available to those in our community for those newcomers....and for those of us who've been here awhile.

Floor Plan

No food, covered bev only
 MAX 16
 6 tables
 projector
 whiteboard



Max 1
 No food
 whiteboard
 No proj

MAX 50
 50 chairs
 10 tables
 projector
 podium
 sink + counter
 food + beverages allowed - no alcohol

5 reservable
 Mtg. rms.

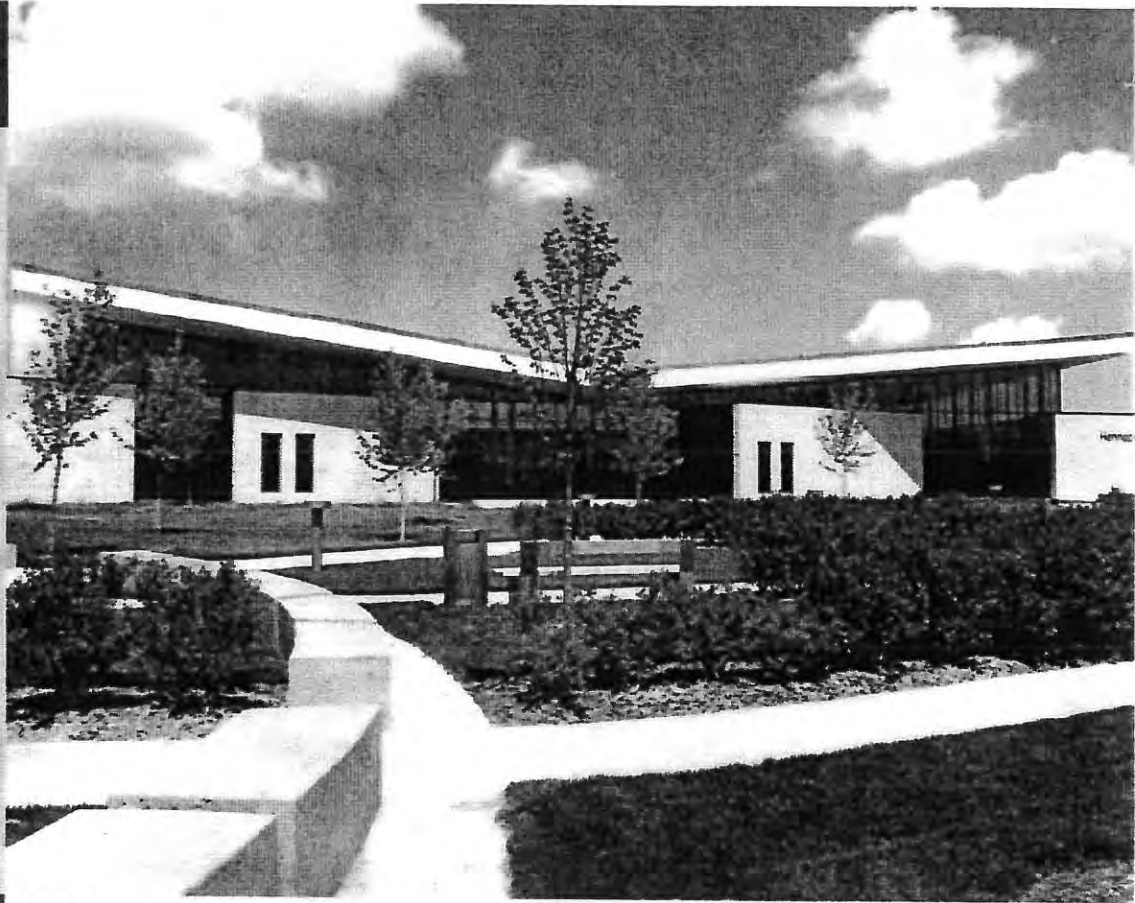
→ 41 libraries

Hennepin County Library Maple Grove

pop. in 2010 61k
pop. in 2017 71k

8th largest
city in
MN

Fact Sheet



PUBLIC ART



IN THE CHILDREN'S AREA
The Book-Loving Dragon by Darcy Ferrill and Shawn Trentlage



ON THE NORTH LAWN
Phenomenon by Janet Lofquist

612.543.6450
8001 Main St. N.
Maple Grove, MN 55369

Hours

Monday–Thursday: 10–9
Friday & Saturday: 10–5
Sunday: 12–5

Five Thursday hours funded by Ballpark Fund

ABOUT MAPLE GROVE LIBRARY

The Maple Grove Library was rebuilt at its new location in 2010. The new library is larger, has more parking, more computers, and about 12,000 additional books, DVDs, CDs and other materials.

Bigger and better

Nearly triple the space of the former library, now 40,000 square feet total

Quadruple the number of parking spaces from 84 to over 350

Expanded collection of more than 114,000 books, DVDs and CDs

Interactive features for early childhood literacy

Expanded and enhanced children's area

Teen zone for out-of-school learning

21 additional public computers for a total of 69 computers with Internet access and 5 public catalog computers; building-wide wireless access

One additional express checkout, for a total of four

Drive-up book return

Comfortable reading and meeting spaces for adults

Summer entrance with reading porch close to pathways that connect with the city of Maple Grove civic area

Expanded space for book clubs, meetings and individual study

Greener

A green roof with plantings reduces storm water runoff, helps insulate the building, and reduces heating and cooling costs

High clerestory windows along the roofline maximize the use of daylight

Lighting that automatically dims or brightens in response to outdoor natural light conditions

Geothermal (lake-based) heating and cooling systems

Low-maintenance landscaping with native plants

Local building materials including white oak and limestone from the Mankato area

Get involved

In addition to attending programs, checking out items and accessing the Internet at your Maple Grove Library, you can also get involved in these ways:

Volunteer

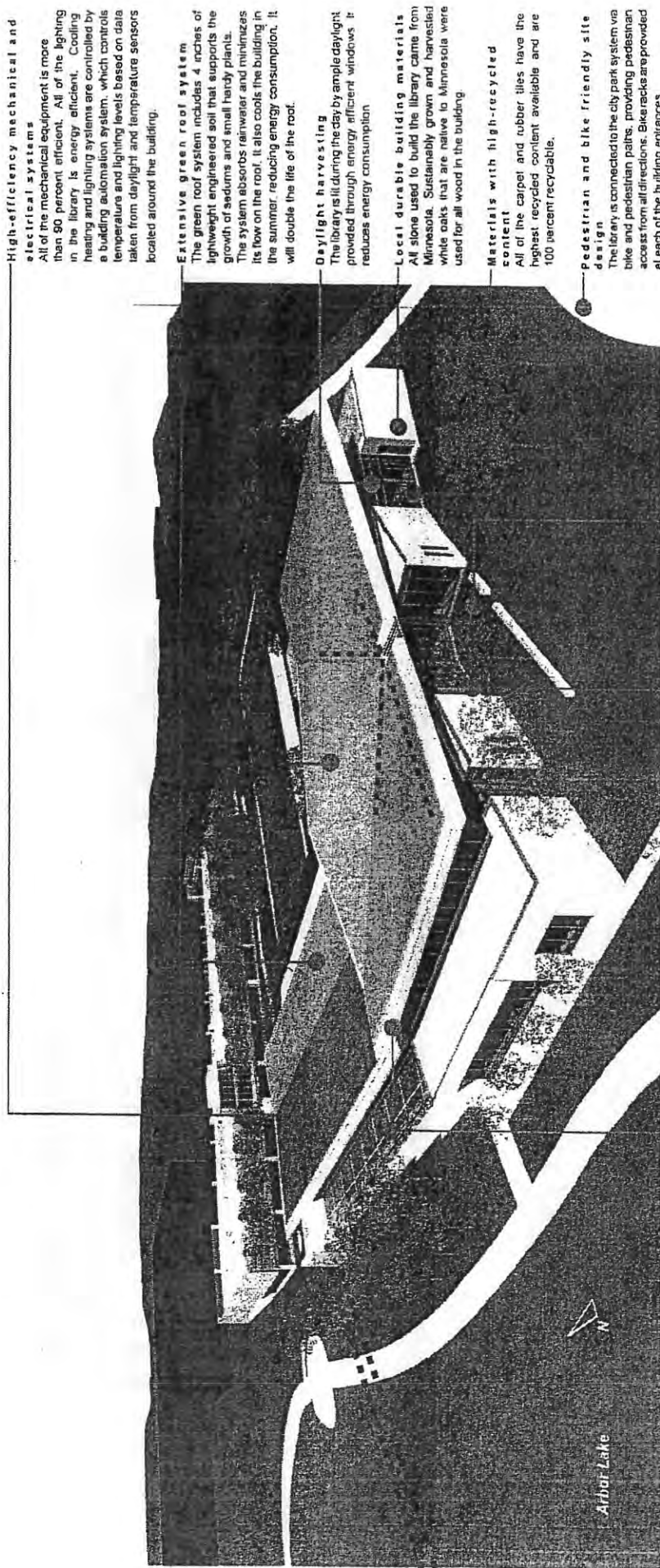
Volunteers extend the reach of Hennepin County Library through various activities ranging from tutoring students to shelving items. To learn more, visit www.hclib.org or call 612.543.8539.

Support your Library. Be a Friend.

Friends of the Hennepin County Library is a vibrant community of supporters for our library system. From fundraising to purchasing library materials to presenting a diverse range of cultural programs, our independent, nonprofit network helps make the wonder of learning and discovery more accessible to all. To learn more, visit www.supportthclib.org/friends or call 612.543.8100.

HOW DOES IT WORK? Integrated Sustainable Design

The library was designed to exceed the Minnesota energy code by more than 40 percent; providing potential annual energy savings of more than 1,300,108 kWh.



High-efficiency mechanical and electrical systems
All of the mechanical equipment is more than 90 percent efficient. All of the lighting in the library is energy efficient. Cooling heating and lighting systems are controlled by a building automation system, which controls temperature and lighting levels based on data taken from daylight and temperature sensors located around the building.

Extensive green roof system
The green roof system includes 4 inches of lightweight engineered soil that supports the growth of sedums and small hardy plants. The system absorbs rainwater and minimizes its flow on the roof. It also cools the building in the summer, reducing energy consumption. It will double the life of the roof.

Daylight harvesting
The library is lit during the day by ample daylight provided through energy efficient windows. It reduces energy consumption.

Local durable building materials
All stone used to build the library came from Minnesota. Sustainably grown and harvested white oaks that are native to Minnesota were used for all wood in the building.

Materials with high-recycled content
All of the carpet and rubber tiles have the highest recycled content available and are 100 percent recyclable.

Pedestrian and bike friendly site design
The library is connected to the city park system via bike and pedestrian paths, providing pedestrian access from all directions. Bike racks are provided at each of the building entrances.

Low maintenance landscape
The landscape is composed of hardy local plantings that should require no watering after their initial growth period.

Reinwater management
The majority of rain water is absorbed by the green roof. During heavy rains an overflow feature directs water into a rock covered basin.

Access floor for data and electrical systems
The floor is made of removable metal panels set on 18 inch high steel supports. All of the air heating and cooling for the building is provided at floor level through diffusers by windows and round outlets in the floor. Locating data and electrical cabling under the floor provides flexible work space for all library users.

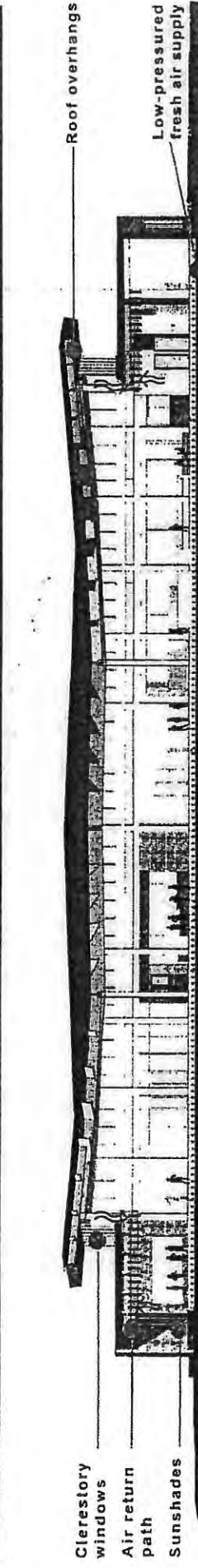
Passive solar shading devices
Roof overhangs and a sun shade canopy over the reading porch reduce the amount of direct sunlight that reaches the windows to minimize heat and glare in the building while still providing the full benefits of natural daylight. Roof overhangs reduce direct sunlight in the summer and allow for some additional heat from the sun in the winter months.

Hydrothermal energy lake loop system
Hydrothermal heat pumps provide heating and cooling for the library utilizing the constant temperature of the water at the bottom of the lake. During the summer, the system removes heat from the library using the stable, low temperature of the water. During winter, it reverses the process removing warmth from the lake.

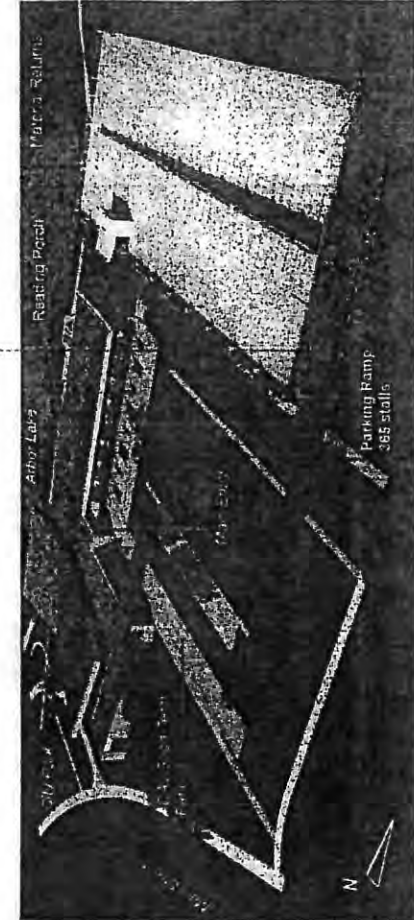
Hennepin Hennepin County Library - Maple Grove MS R
 Mechanical Engineering
 BKBIM ENGINEERING
 Landscape Architect
 20

HOW DOES IT WORK? Daylight Harvesting; Under-floor Distribution

Daylight harvesting: Cool northern light is fully harvested with the help of high clerestory windows, direct sunlight is shaded by roof overhangs on the south side, and low direct light from the west and east is faded by sunshades that are operated through a building automation system, which collects data from light and temperature sensors located in the library.



Under-floor distribution system: Conditioned air is distributed at low pressure under the floor. Using the natural process of hot air rising and cool air falling (called stratification), the air supply is provided close to users of the building. Hot used air rises and is drawn back into the air handling unit. People and computers generate a lot of heat. Even in the winter months, the library needs to be cooled in the center and heated only at the perimeter. Because people will occupy the bottom 6 plus feet off the floor, providing air at this level allows for big energy savings and ensures that the cleanest air is delivered to these spaces.



Automated materials handling: When library material is placed in the book return, an automatic conveyor moves it to the sorter, which scans the barcode on the material and assigns it to one of the smartbins connected to the sorter. This computer-operated system enhances the mobility of the collection, increasing efficiency and minimizing repetitive motion injuries and other stress on staff.



Healthy space: All non-toxic (low to zero levels of volatile organic compounds) paints, sealants and glues were used in the library to ensure good indoor air quality.

Flexible interior space: An open floor plan allows for long-term flexibility and maximizes staff awareness of customers' needs.



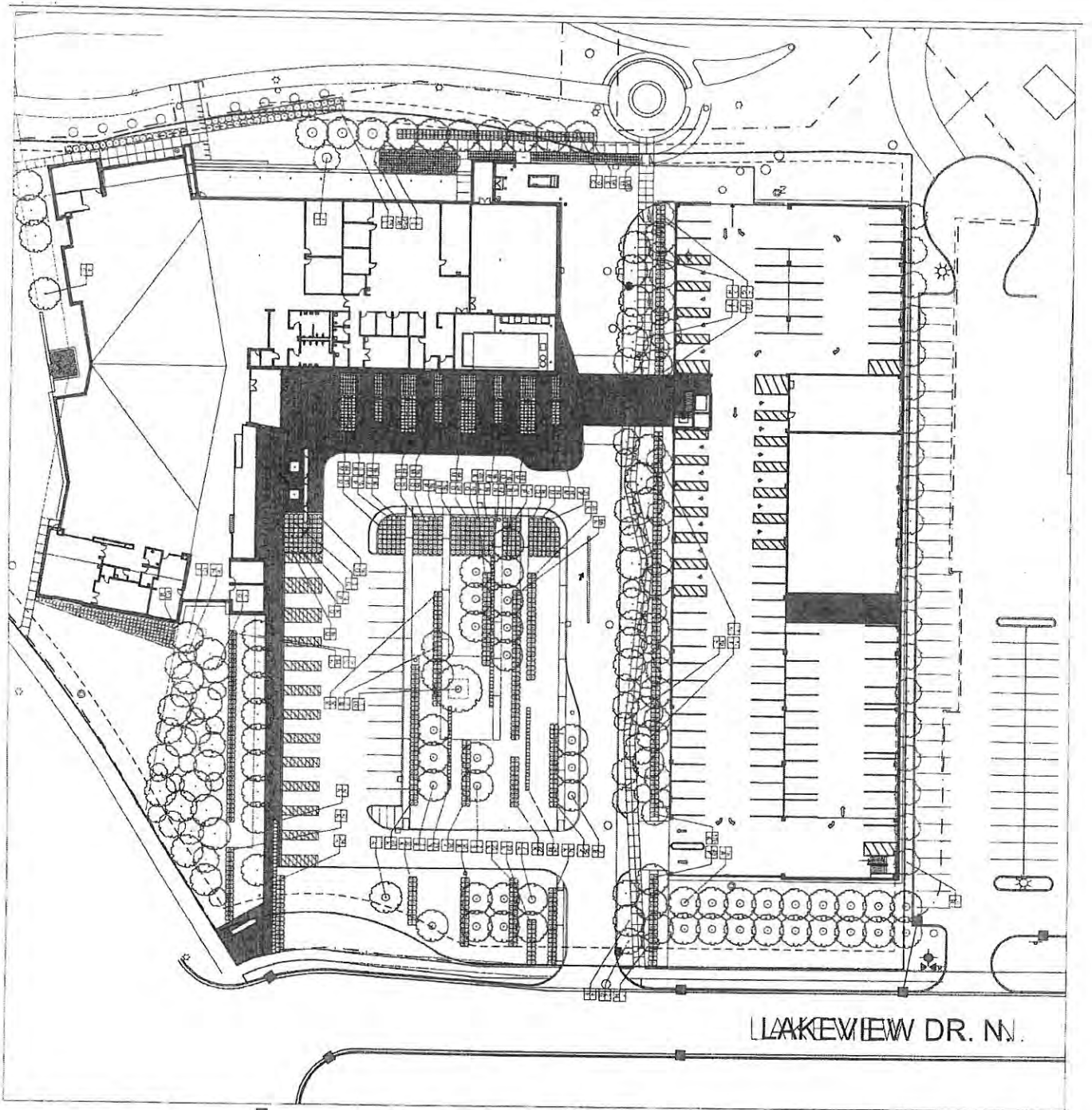
Hennepin County Library - Maple Grove



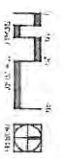
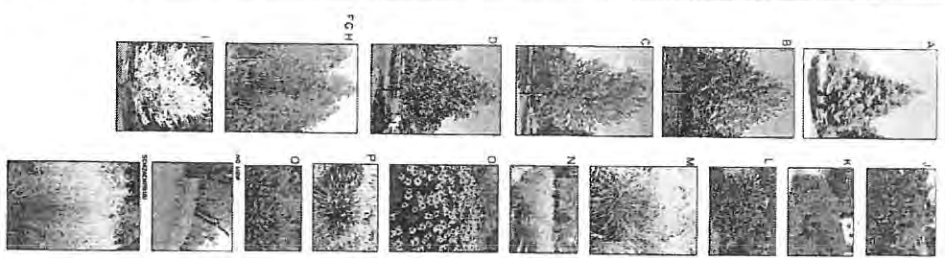
Mechanical room
 Staff area
 Main entry
 Teen area
 Children's area
 Meeting room
 Reading porch
 Paper returns
 Astor Lobby
 Parking Ramp
 365 stalls

BKBIM
 BUILDING INFORMATION MODELING
 Structural Engineer
 KCI
 KCI
 Mechanical Engineer
 MSR
 Mechanical Engineer
 AT
 Architectural Firm
 District Contractor



LAKEVIEW DR. N.

PLANT IMAGES



MS R

DEBRA EMMERT

ARCHITECT

1000 W. WASHINGTON

MINNEAPOLIS, MN 55401

TEL: 612.291.1111

FAX: 612.291.1111

WWW.MSR-ARCHITECTS.COM

DESIGN: 2008

CONSTRUCTION: 2009

Hennepin County Library - Maple Grove
8001 Main Street
Maple Grove

NO.	DESCRIPTION	DATE	BY	CHECKED
1	LANDSCAPE PLAN	10/15/08	DEBRA EMMERT	
2	REVISION			
3	REVISION			
4	REVISION			
5	REVISION			
6	REVISION			
7	REVISION			
8	REVISION			
9	REVISION			
10	REVISION			

L1